

# MudSling™ Avant 12

## Front Fender Extension

PATENT PENDING

## Installation Guide

Fits all years **BMW R1200GS/ADV**

**m m**<sup>a</sup><sup>o</sup>

**Tool Required:**  
Torx T25 Screwdriver

**Parts:**  
3 Avant Brackets with self-locking nuts  
3 10mm T25 Torx Screws  
Avant

**\* PLACE THE BIKE ON ITS CENTER STAND ON LEVEL GROUND.**

*Turn the handle bars for installation convenience.  
Clean the top side of your front fender.*

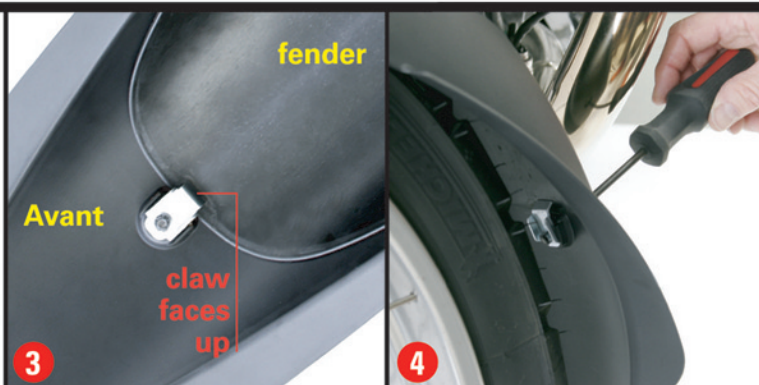
**1** Avant brackets feature three self-locking nuts to assure tight assembly. The nuts present some resistance to turning the screws, so it may help to wear a light glove to make it more comfortable to grip the bracket.

**2** Loosley pre-install the center bracket on the Avant.



**3** Slip the Avant over the front fender until the center mounting boss makes contact with the fender's bottom edge. Make sure the side mounting flanges fit tightly against the fender's side edges.

**4** Steady the center bracket with with one hand, making sure it fits between the two raised ribs, while tightening the center screw.



**5** Position a bracket behind the side mounting flange in between the raised ribs. Make sure the claw faces up against the inside of the fender.

**6** On the left side thread the T-25 Torx driver past the brake line and install the screw.

Install the right side bracket in the same way.  
Check final alignment and tighten all screws securely.

*Re-check screw tightness after the first ride.*



**Care Instructions:** Clean with soap and water. Armor-All works well to restore appearance.